

Update on the CAMS Spectrograph data processing pipeline and results

Timothy Beck, Professor of Physics and Astronomy, Mendocino College

Peter Jenniskens, SETI Institute; NASA Ames Research Center

Nicholas Bianez and Michael Preciado, Mendocino College

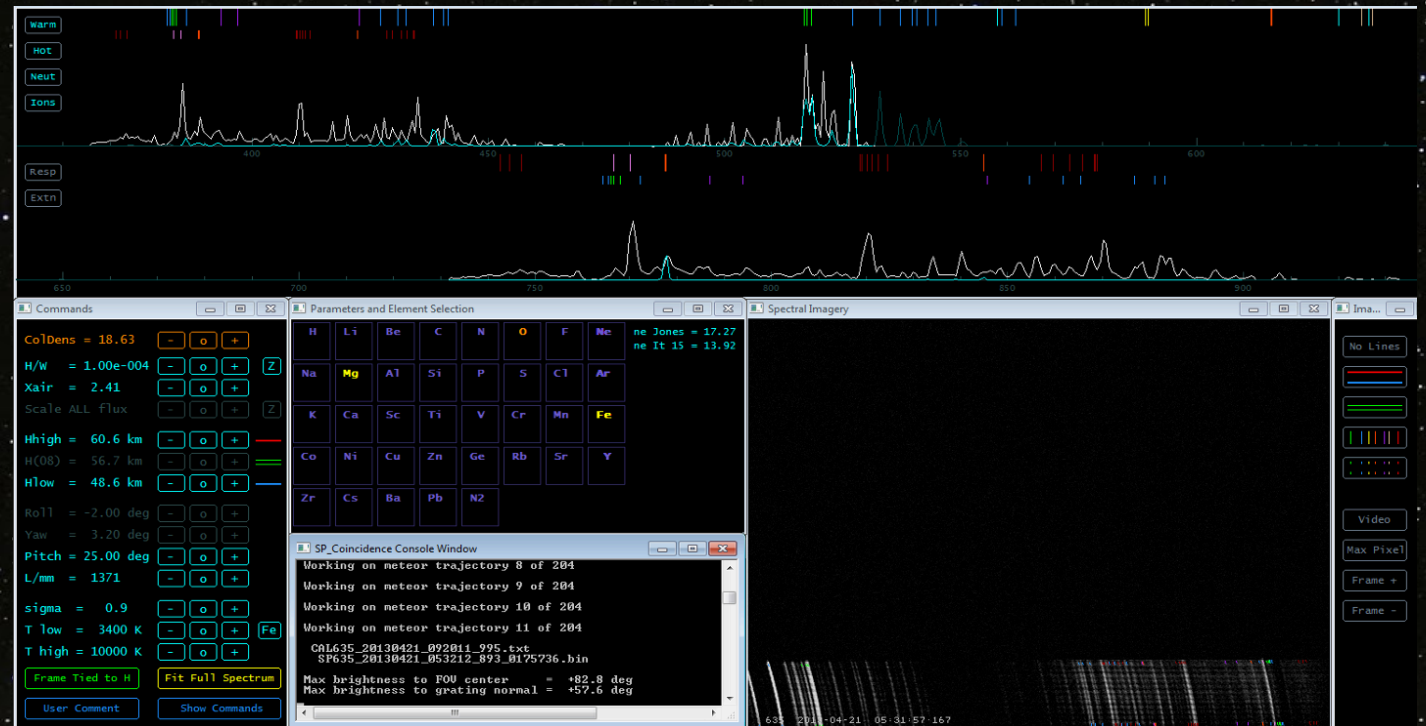
CAMS Spectrograph (CAMSS)

- Sunnyvale, CA
- 16 *Watec Wat902H2 Ultimate* cameras w/12mm f1.2 lens
- 1x1cm *Ibsen Photonics FSTG-VIS1379-911* gratings
- 1379 lines/mm
- 1.1 nm/pixel dispersion
- 410-900nm wavelength



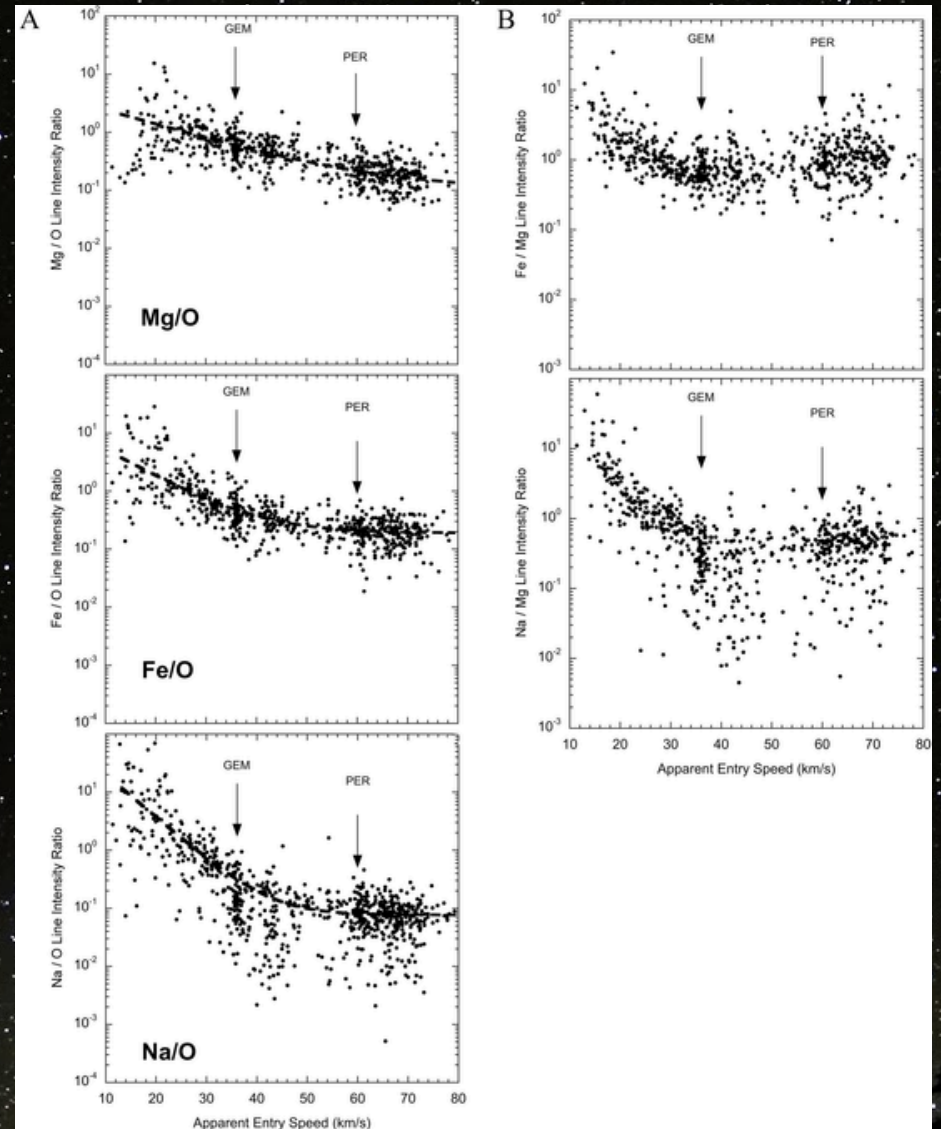
CAMS Spectrograph (CAMSS)

- Usable spectra brighter than peak magnitude +0.2
- Spectra fit to strong emission lines of Mg, Na and O
- Extracted spectrum in white, model spectrum in blue
- User selectable parameters
- CAMSS-CAMS coincidence information
- Single frame meteor spectrum



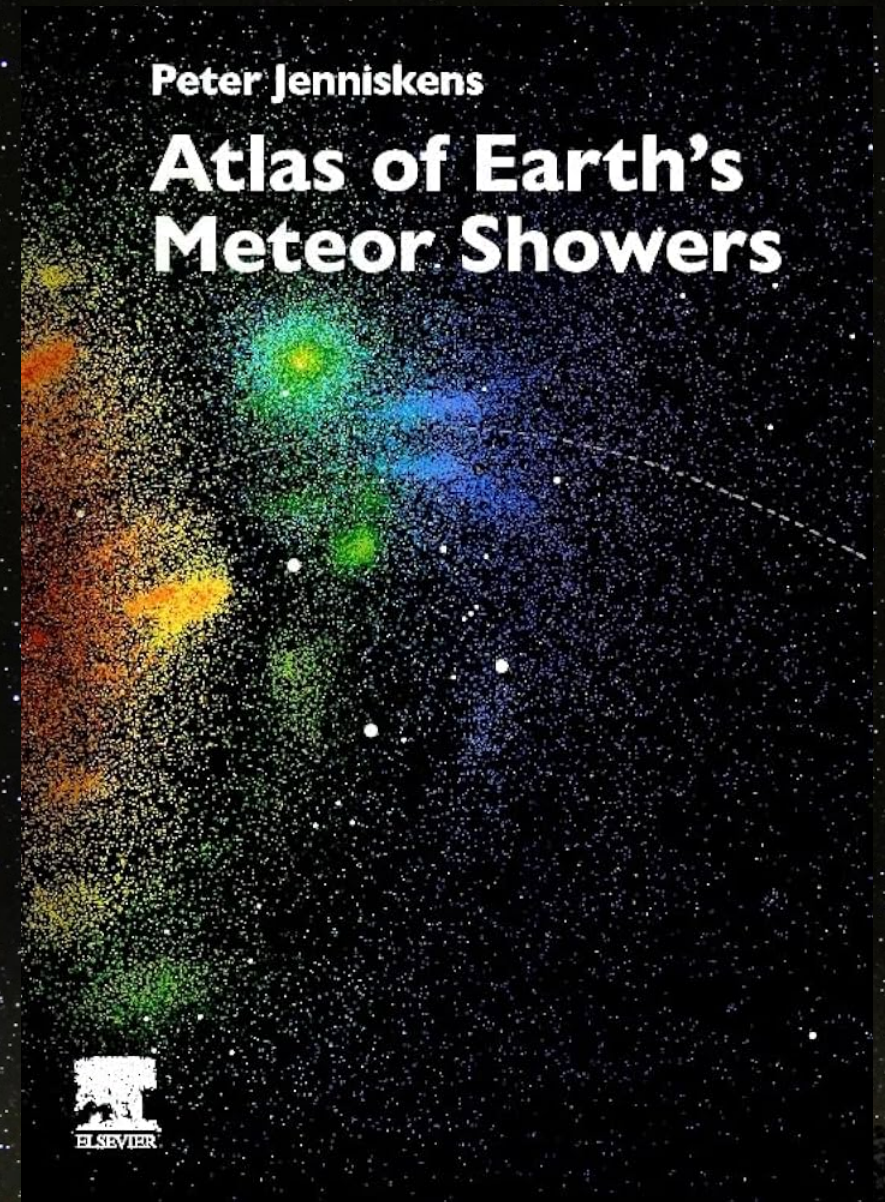
CAMSS Analysis To Date

- June 2012-August 2013
- 1005 spectra recorded
- 462 assigned to showers



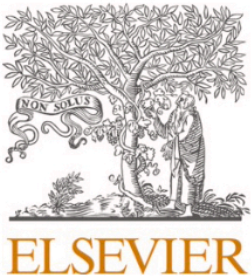
CAMSS Analysis To Date

- June 2012-August 2013
- 1005 spectra recorded
- 462 assigned to showers



CAMSS Analysis To Date

Icarus 423 (2024) 116229



Contents lists available at [ScienceDirect](#)

Icarus

journal homepage: www.elsevier.com/locate/icarus

Properties of outer solar system pebbles during planetesimal formation
from meteor observations

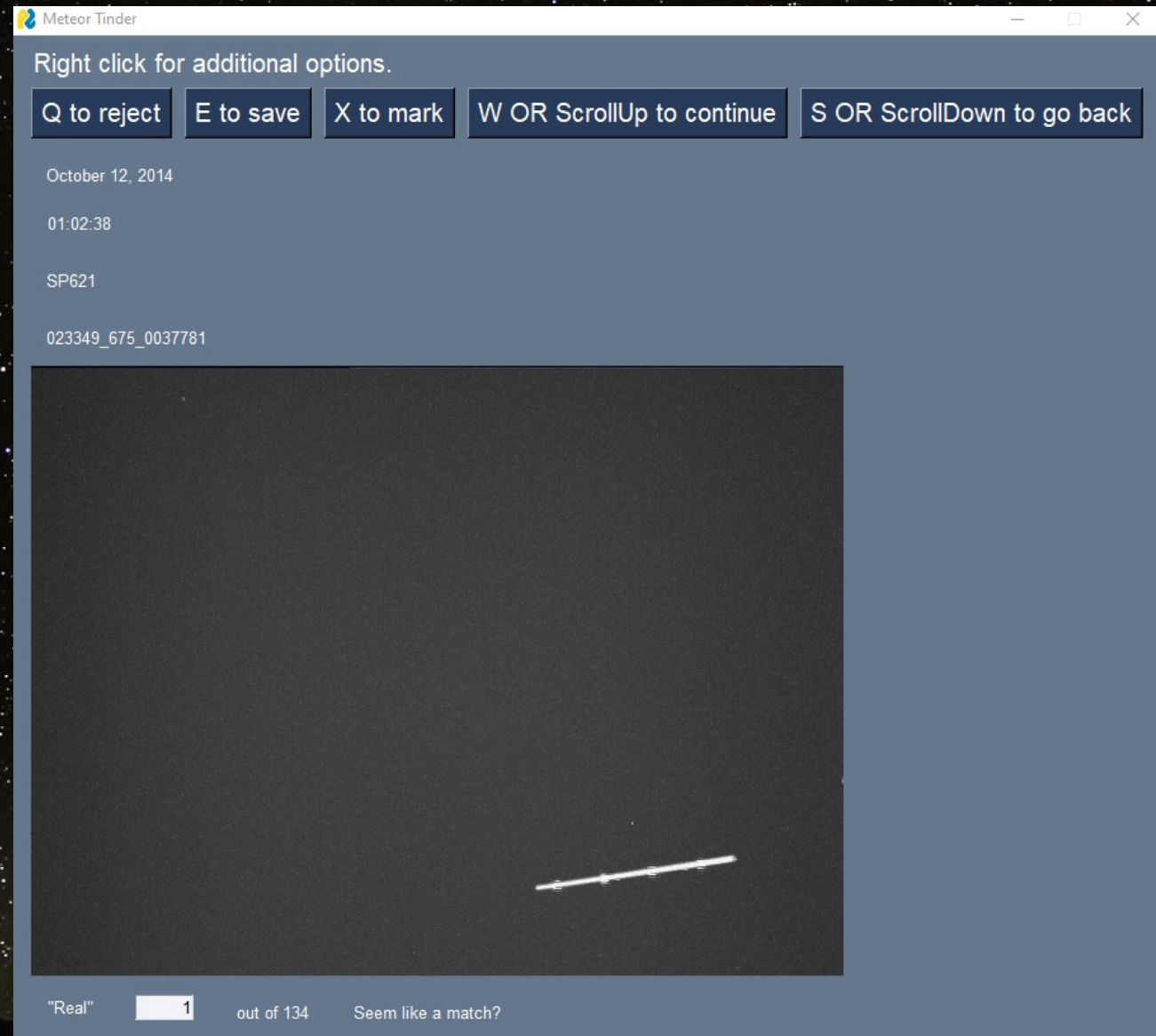
CAMSS Analysis To Date

- September 2013-
September 2024

This page intentionally left blank

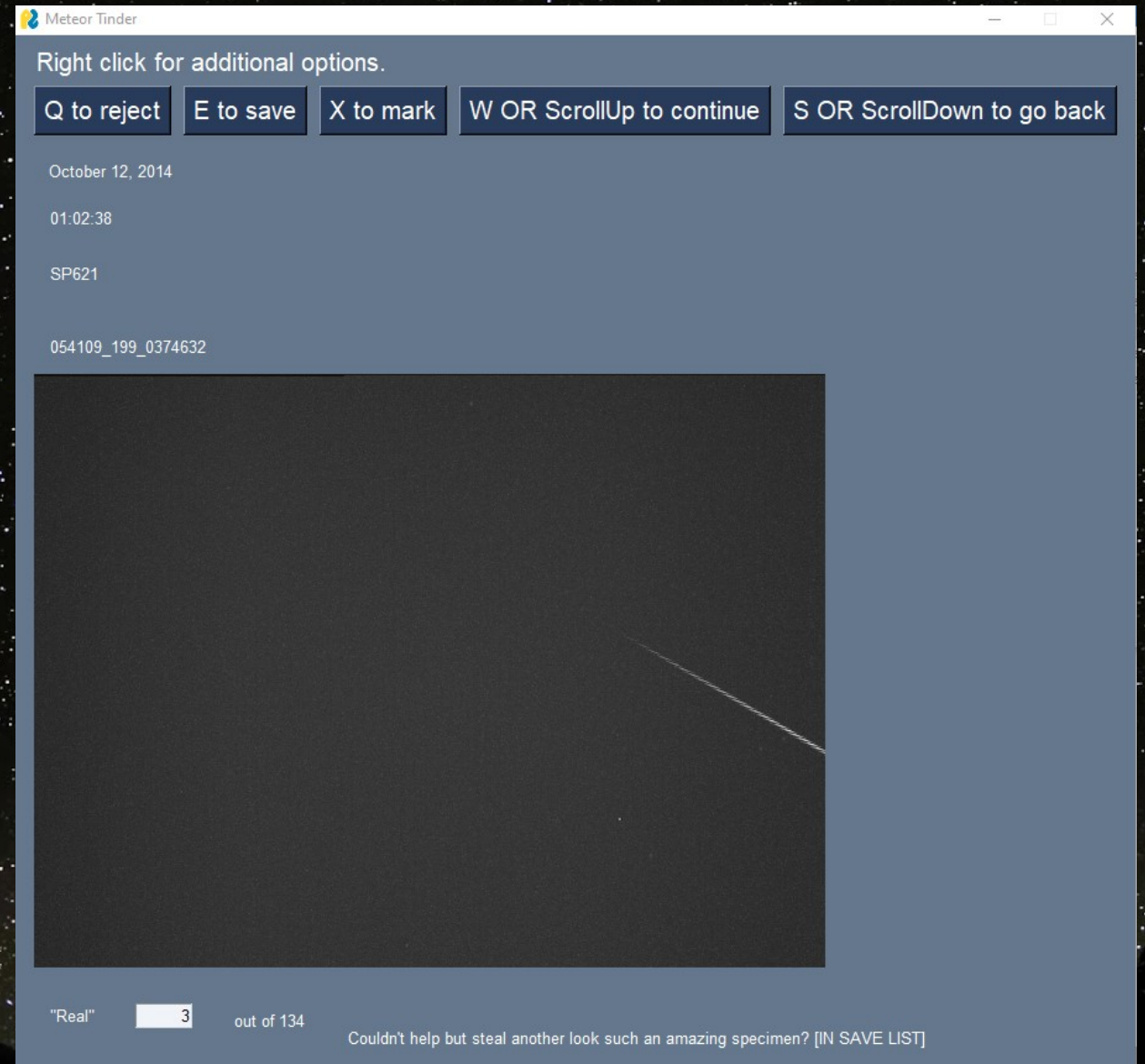
Meteor Tinder

- Python interface for quickly separating real meteors from false events
- User programmable keystrokes and/or mouse scroll
- Automatically archives SPFF files for spectra analysis



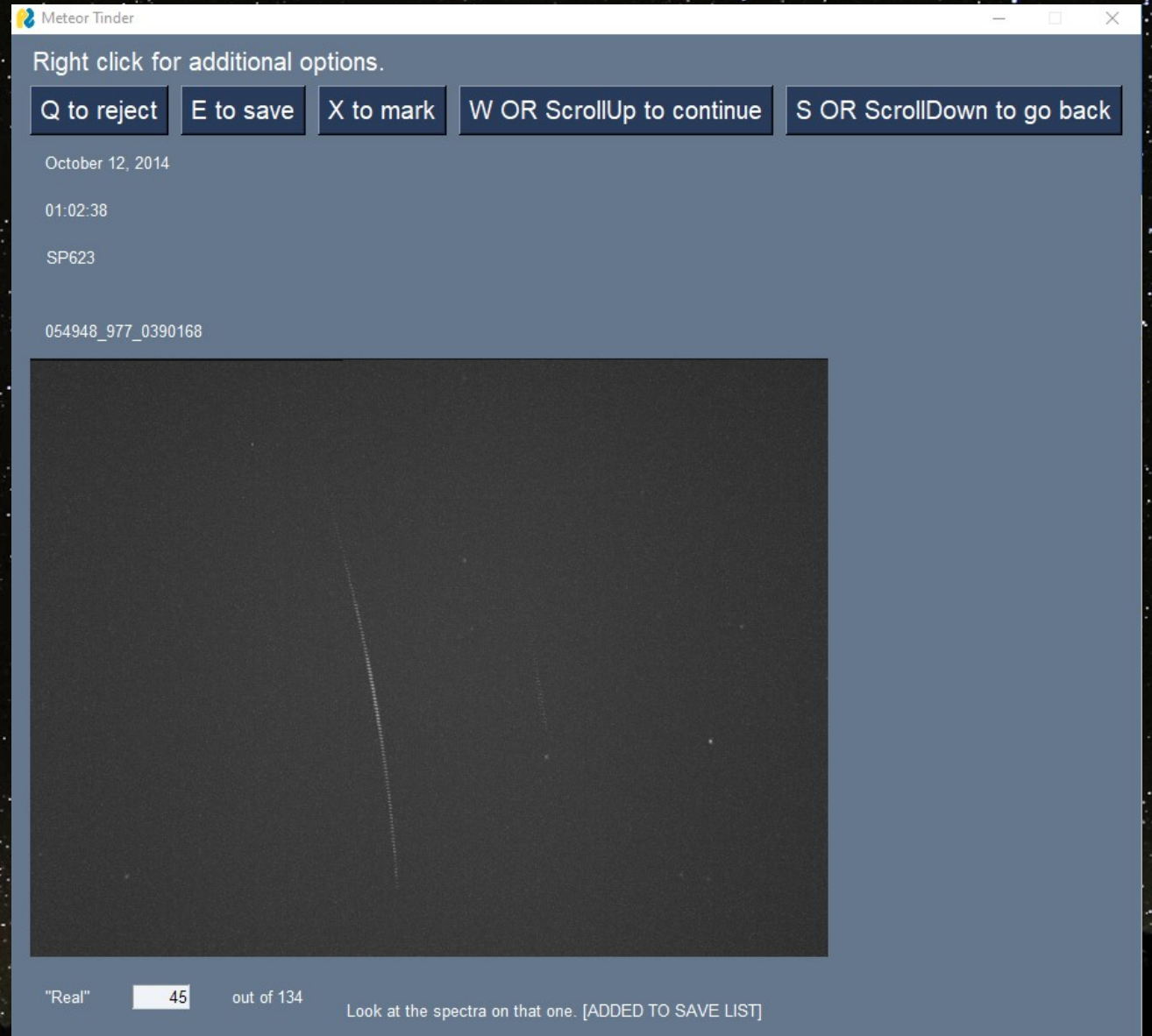
Meteor Tinder

- Right click for full 8 second video file

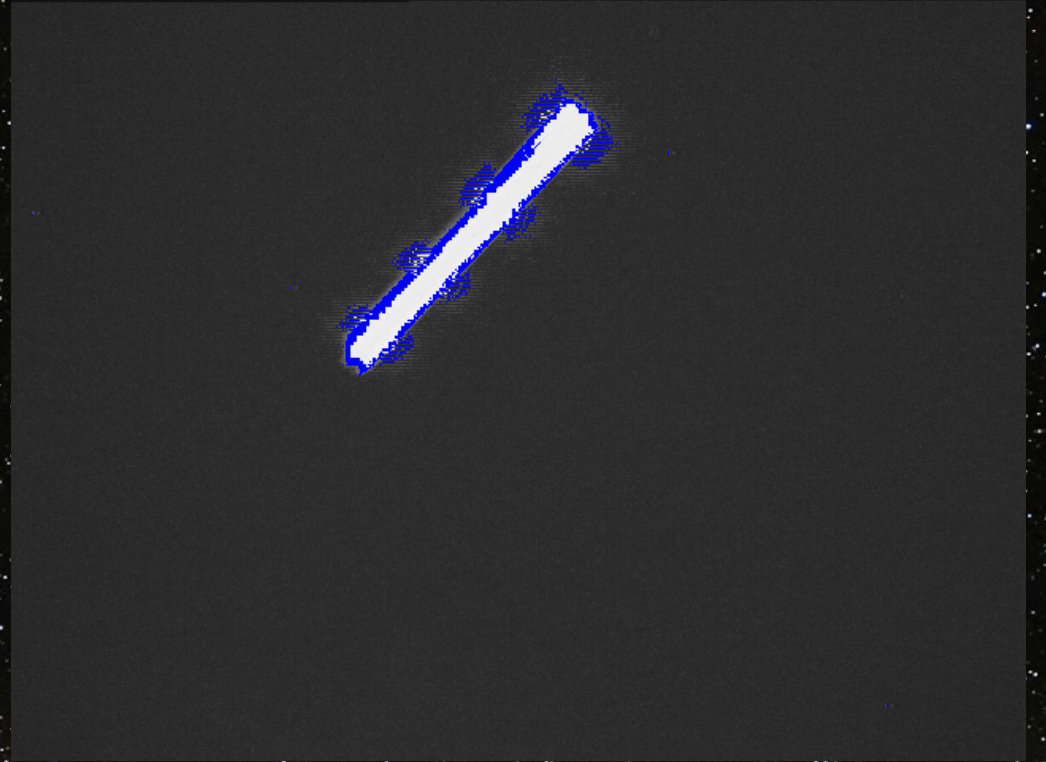
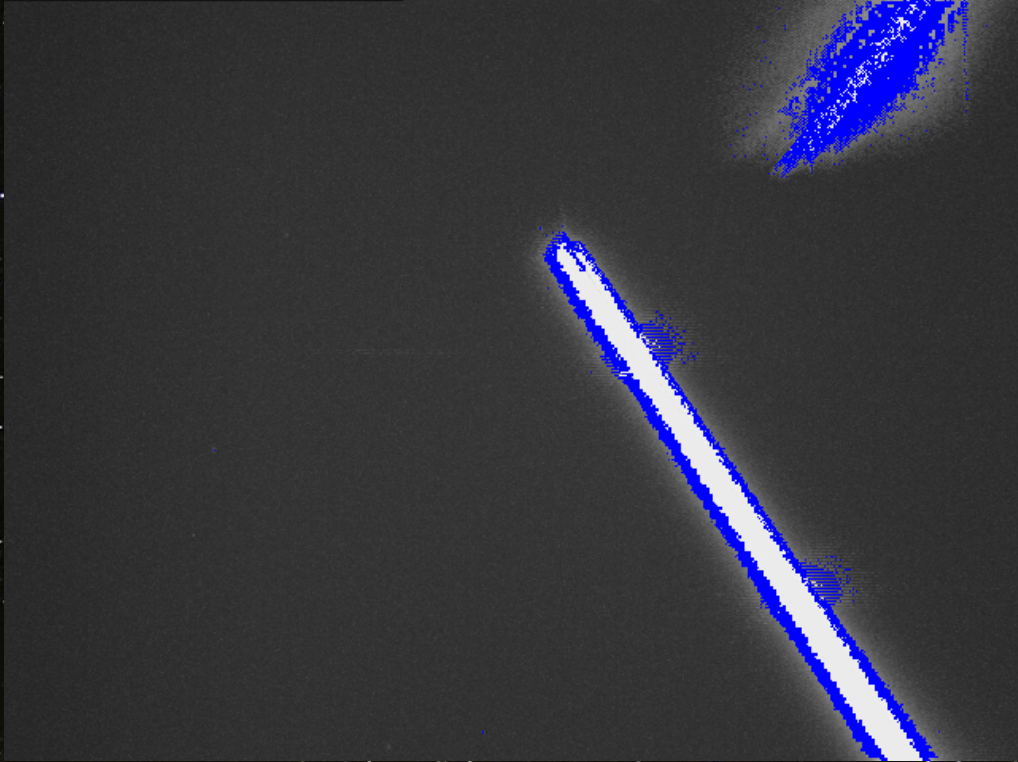


Meteor Tinder

- Right click for full 8 second video file



New Sorting Routine



New Sorting Routine



Thanks Everybody!

